

Residential Recycling in Butler County



Information on Butler County's Recycling Program for Residents

**Butler County
Department of
Recycling &
Waste Management**

PO Box 1208
124 W. Diamond St.
Butler, PA 16003

Phone:
724.284.5305
Fax: 724.284.5315

Email & Web:
skelly@co.butler.pa.us
www.recyclebutler.us

Who Can (and Should) Recycle

Curbside recycling is available to all residents in Butler County's 57 municipalities. Ordinance 9201 requires all residential waste haulers operating in Butler County to also pick up unlimited amounts of curbside recycling from their customers. Also, waste haulers do not give a discount to anyone not recycling. Every waste hauler offers different levels of waste collection service for households producing different amounts of waste. Just like any other public service, it wouldn't be fair for a family producing one bag of waste per week to pay the same as one producing four bags per week. If you recycle and can divert more to your recycling bin, then you can choose a lower, smaller amount of waste service and possibly save some money!

Almost all of Butler County's municipalities have voluntarily passed Ordinances setting standards for the collection of recyclables and requiring their residents, businesses and institutions to recycle. Check with your municipality to get specifics about your recycling ordinance.

In Butler County, recycling collection is either offered as commingled recycling or single stream recycling. This includes the collection of many recyclables which may include paper, junk mail, cardboard, all cans, most plastics) in one bin, mixed together. Check with your hauler to get specifics on exactly what can be placed in your recycling bin since it varies by hauler.

Yard Waste

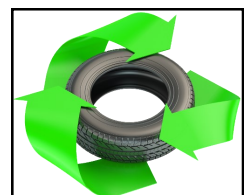
Some municipalities in Butler County also offer a spring and/or fall curbside leaf pickup or access to a municipal leaf & yard waste drop-off site. Call your municipality to find out if these services are offered.



Yard waste, including grass clippings should not be placed curbside for waste collection. They should be composted on your property, taken to a local compost site, or you can call your waste hauler to see if they have their own compost site and can pick up for you.

"Hard to Recycle" Items:

Most households have large bulky items or unusual things that can be recycled or reused but can't be placed curbside for pickup unless you inform your waste hauler beforehand. For items such as appliances, electronics, useable building materials, automotive fluids, tires, etc. please call the Butler County Dept. of Recycling & Waste Mgt. for more information on places where these types of items can be taken.



Get Recycling

Right!

Do Your Part...



Hazardous Waste In Your Home:

For items such as solvents, paint, insecticides, batteries, cleaning chemicals, pesticides, pool chemicals, etc., Butler County conducts multiple hazardous waste and electronics collections each year for Butler County residents at one location. Check our web site at: <https://www.butlercountypa.gov/192/Recycling-Waste-Management> or call **724.284.5305** for more information.

Close the Loop!

Just as important as recycling is buying recycled products made from what was collected. There are a wide variety of recycled products on the market at comparable and often lower prices than standard products. In the past, these products were considered inferior but this is no longer true due to advances in the technologies used to create these products. In buying recycled products you are creating jobs in the industry, reducing greenhouse gases and saving precious natural resources.



Why Recycle?

- Provide industry with an environmentally preferred source of raw materials
- Conserve Natural Resources
- Reduce Greenhouse Gas Emissions
- Save Energy
- Reduce Emissions of Air & Water Pollutants



Recycling Means Business in PA

Recycling and Reuse Establishments = 6,373
Recycling and Reuse Employment = 66,041 jobs
Annual Sales Receipts..... \$ 30.0 billion
Annual Payroll.....\$4.8 billion

For More Information

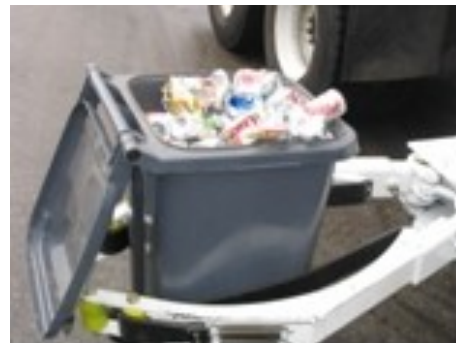
Pennsylvania Department of Environmental Protection: www.depweb.state.pa.us

Professional Recyclers of PA:
www.proprecycles.org

Earth 911: www.earth911.org

Use Less Stuff Report: www.use-less-stuff.com/

Freecycle: www.freecycle.org (give and get all kinds of free items)



Please Note: You should always call your waste / recycling hauler if you have any questions about curbside recycling.

Board of Butler County Commissioners

Leslie A. Osche, Chairman
Kimberly D. Geyer, Vice-Chairman
Kevin E. Boozel, M.S. Secretary